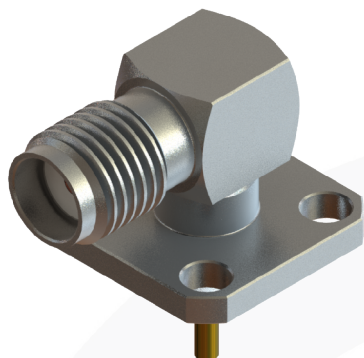
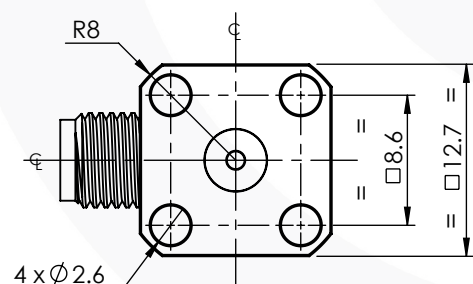
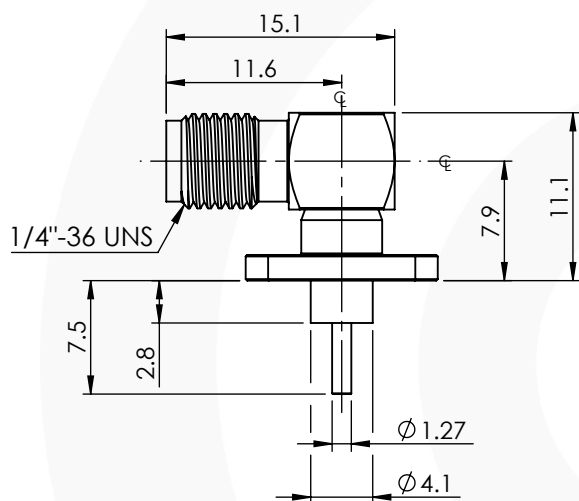


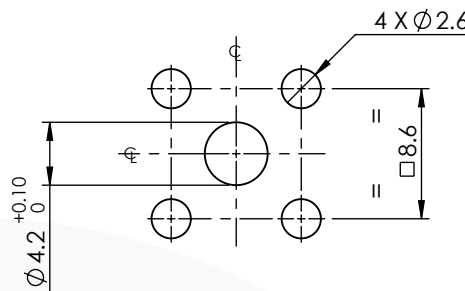
SMA RIGHT ANGLE 4 HOLE FLANGE JACK EXTENDED DIELECTRIC 30-373-H3-2.8



images for illustration purposes only



Hole Layout



Assembly Procedure: Not Applicable

Tooling

Centre Contact: Solder Tool No: Not Applicable

Crimp Sleeve: Not Applicable Tool No: Not Applicable

Alignment Tool: Not Applicable Extraction: Not Applicable

Environmental Specification

Operating Temp: -65 to +125 Deg C.

IP Rating (Mated): IP 40

Electrical Specification

Impedance: 50 Ohm

Frequency: 0-18 GHz

Dielectric W/V: 1000 Veff

Insulation res: 5000 M-Ohm

Mechanical Specification

Contact Retention: 27 N min

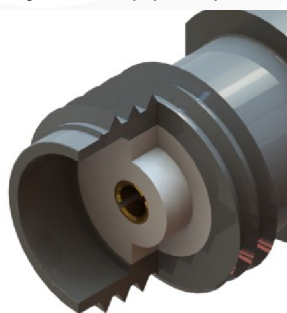
Cable Retention: Not Applicable

Mating cycles: 500

Weight: 4.83 g

Connector Interface

image for illustration purposes only



4	CONTACT	BRASS	GOLD
3	INSULATOR	PTFE	N/A
2	FEMALE CONTACT	BERYLLIUM COPPER	GOLD
1	BODIES	STAINLESS STEEL	PASSIVATED
ITEM	DESCRIPTION	MATERIAL	PLATING
A4	SHEET 1 OF 1	DIMENSIONS ARE IN MILLIMETRES	
REVISION : A00		NAME	SIGNATURE
ISSUE : 1		DATE	
6-8 COLNE ROAD, TWICKENHAM, MIDDLESEX. TW1 4JR		DRAWN	G.E.
		CHK'D	P.S.
		APPV'D	
THE INFORMATION IS GIVEN AS AN INDICATION ONLY AND IS SUBJECT TO CHANGE WITHOUT NOTICE. IN THE CONTINUAL GOAL TO IMPROVE OUR PRODUCTS, WE RESERVE THE RIGHT TO MAKE ANY MODIFICATIONS NECESSARY WITHOUT PRIOR NOTICE.			