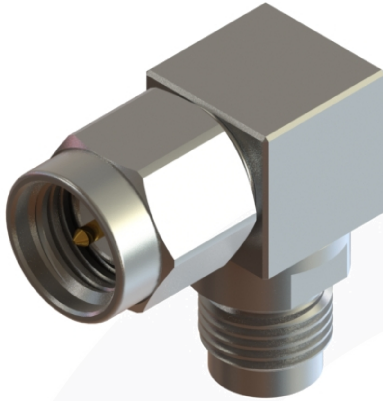
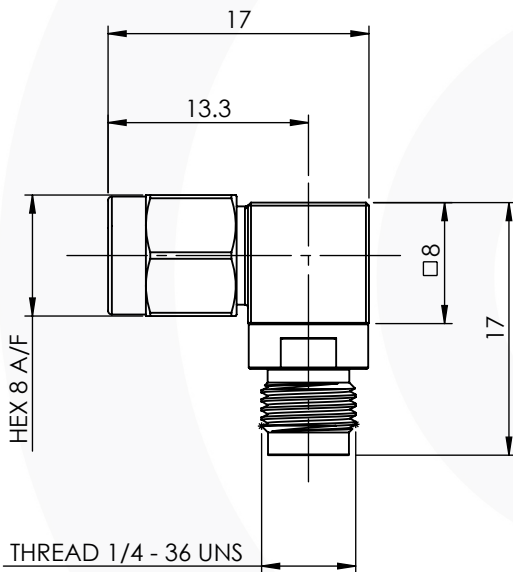


SMA RIGHT ANGLE PLUG TO JACK ADAPTOR 30-542-H3



images for illustration purposes only



Environmental Specification

Operating Temp: -55 to +155 Deg C.
IP Rating (Mated): IP 68 (10m for 4hrs)

Electrical Specification

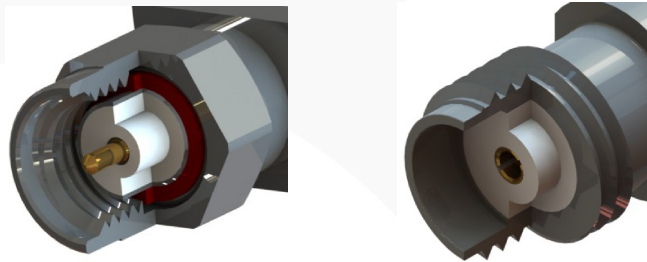
Impedance: 50 Ohm
Frequency: 0-18 GHz
Dielectric W/V: 1000 Veff
Insulation res: 5000 M-Ohm

Mechanical Specification

Contact Retention: 27 N min
Cable Retention: Not Applicable
Mating cycles: 500
Weight: 7.38 g

Connector Interface

image for illustration purposes only



7	JACK BODY	STAINLESS STEEL	PASSIVATED
6	WASHER	STAINLESS STEEL	PASSIVATED
5	COUPLING NUT	STAINLESS STEEL	PASSIVATED
4	GASKETS	SILICONE	N/A
3	INSULATORS	PTFE	N/A
2	CENTRE CONTACT	BeCu	GOLD
1	PLUG BODY	STAINLESS STEEL	PASSIVATED
ITEM	DESCRIPTION	MATERIAL	PLATING

A4	SHEET 1 OF 1		DIMENSIONS ARE IN MILLIMETRES		
REVISION :	A00		NAME	SIGNATURE	DATE
ISSUE :	1	DRAWN	G.E.		09/03/17
		CHK'D	I.G.		09/03/17
		APPV'D			
<p>6-8 COLNE ROAD, TWICKENHAM, MIDDLESEX. TW1 4JR</p> <p>THE INFORMATION IS GIVEN AS AN INDICATION ONLY AND IS SUBJECT TO CHANGE WITHOUT NOTICE. IN THE CONTINUAL GOAL TO IMPROVE OUR PRODUCTS, WE RESERVE THE RIGHT TO MAKE ANY MODIFICATIONS NECESSARY WITHOUT PRIOR NOTICE.</p>					