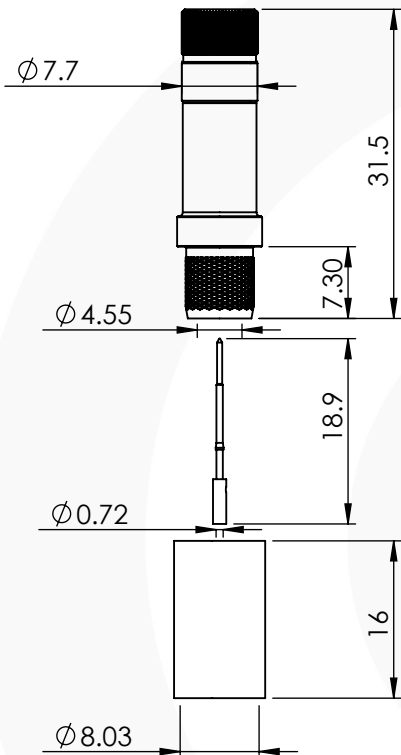
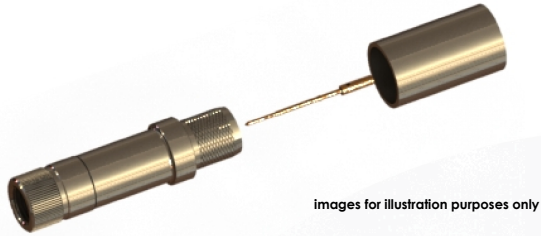


## 1.0/2.3 SCREW LOCK CRIMP/CRIMP PLUG 52-005A-B66-FJ

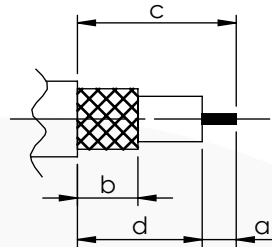


DIN1.0/2.3 Screw Lock Design to prevent signal loss in vibrating environments as recommended by CoaxPress

### Suitable for Cables:

(FJ) CoaxPress 0.7/7.0 High Flex

### Stripping Dimensions



a = 4.0 mm  
\* b = 8.0 mm  
c = 16.0 mm  
d = 12.0 mm

\* STRIP FOIL SCREEN TO DIM "b"

### Assembly Procedure: AP001

### Tooling

Centre Contact: Indent or SQ 0.95mm A/F Tool No:96-HTS-75A

Crimp Sleeve: Hex 8.23mm A/F Tool No:96-HTS-75A

Alignment Tool: 100-1023 Extraction: Not Applicable

### Environmental Specification

Operating Temp: -55 to +155 Deg C.

IP Rating (Mated): IP 40

### Electrical Specification

Impedance: 75 Ohm

Frequency: 0-12 GHz

Dielectric W/V: 750 Veff

Insulation res: 5000 M-Ohm

### Mechanical Specification

Contact Retention: 10 N min

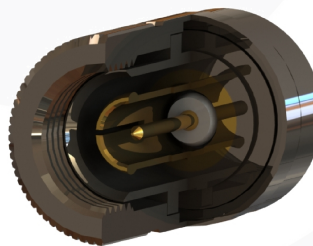
Cable Retention: 150 N min

Mating cycles: 500

Weight: 10.16 g

### Connector Interface

image for illustration purposes only



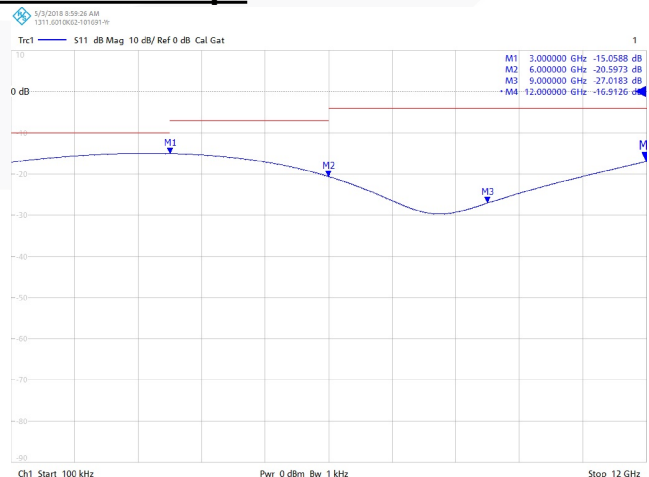
-15.06 dB @ 3.0 GHz

-20.60 dB @ 6.0 GHz

-27.02 dB @ 9.0 GHz

-16.91 dB @ 12.0GHz

### Return Loss Graph



ITEM	DESCRIPTION	MATERIAL	PLATING
8	REAR BODY	BRASS	NICKEL
7	OUTER CONTACT	BERYLLIUM COPPER	GOLD
6	CENTRE CONTACT	PHOSPHOR. BRONZE	GOLD
5	RETAINER	STAINLESS STEEL	N/A
4	CRIMP SLEEVE	BRASS	NICKEL
3	BODY	BRASS	NICKEL
2	INSULATOR	PTFE	N/A
1	COUPLING NUT	BRASS	NICKEL

A4 SHEET 1 OF 1		DIMENSIONS ARE IN MILLIMETRES		
REVISION :	C00	NAME	SIGNATURE	DATE
ISSUE :	1	DRAWN	IG	17/05/2019
		CHK'D	GE	18/05/2019
		APPV'D		

6-8 COLNE ROAD, TWICKENHAM, MIDDLESEX. TW1 4JR

THE INFORMATION IS GIVEN AS AN INDICATION ONLY AND IS SUBJECT TO CHANGE WITHOUT NOTICE. IN THE CONTINUAL GOAL TO IMPROVE OUR PRODUCTS, WE RESERVE THE RIGHT TO MAKE ANY MODIFICATIONS NECESSARY WITHOUT PRIOR NOTICE.