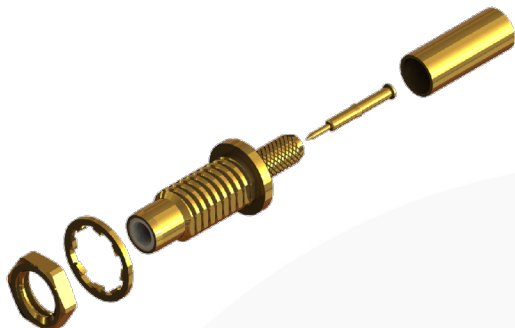
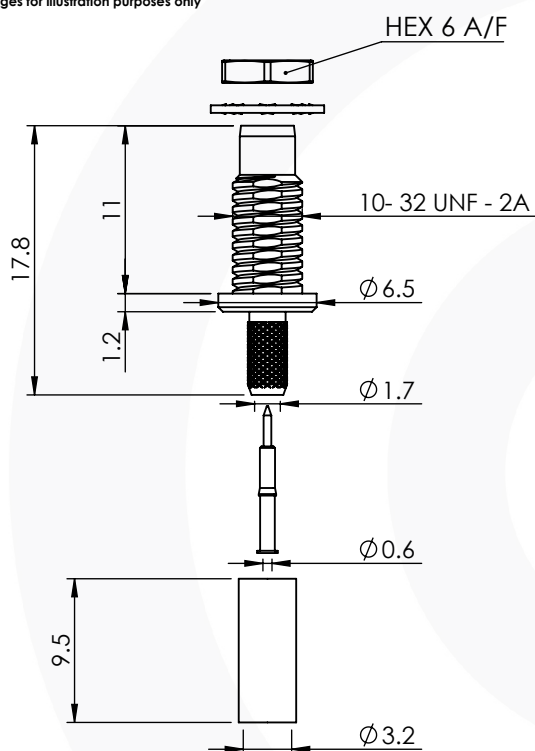


## SMC STRAIGHT BULKHEAD CRIMP/CRIMP JACK

### 34-254-D3-AD



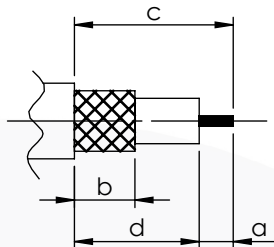
images for illustration purposes only



### Suitable for Cables:

(AD) RG316, RG174, RG188, LMR100, WBC100, URM95, KX3, KX22

### Stripping Dimensions



a = 3.5 mm  
b = 5.5 mm  
c = 11.0 mm  
d = 7.5 mm

### Assembly Procedure: AP020

### Tooling

Centre Contact: Indent Crimp Tool No: MH800 (GB109)

Crimp Sleeve: Hex 3.25mm A/F Tool No: 336J

### Environmental Specification

Operating Temp: -55 to +155 Deg C.

IP Rating (Mated): NONE

### Electrical Specification

Impedance: 50 Ohm

Frequency: 0-4 GHz

Dielectric W/V: 1000 Veff

Insulation res: 1000 M-Ohm

### Mechanical Specification

Contact Retention: 18 N min

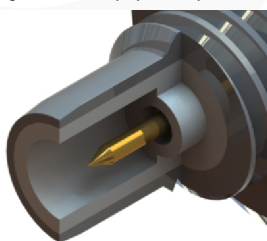
Cable Retention: 100 N min

Mating cycles: 500

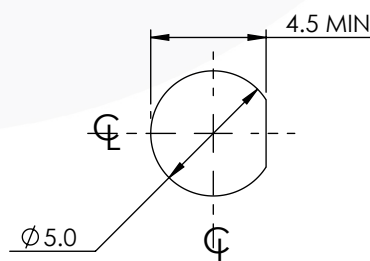
Weight: 1.75 g

### Connector Interface

image for illustration purposes only



### Recommended Mounting Hole



6	WASHER	BRASS	GOLD
5	NUT	BRASS	GOLD
4	CRIMP SLEEVE	BRASS	GOLD
3	INSULATOR	PTFE	N/A
2	CENTRE CONTACT	PHOSPHOR BRONZE	GOLD
1	BODY	BRASS	GOLD
ITEM	DESCRIPTION	MATERIAL	PLATING

<b>A4</b>	<b>SHEET 1 OF 1</b>	<b>DIMENSIONS ARE IN MILLIMETRES</b>		
<b>REVISION :</b>	<b>A00</b>	<b>NAME</b>	<b>SIGNATURE</b>	<b>DATE</b>
<b>ISSUE :</b>	<b>1</b>	<b>DRAWN</b>	G.E.	27/07/2021
		<b>CHK'D</b>	P.S.	27/07/2021
		<b>APPV'D</b>		
<b>6-8 COLNE ROAD, TWICKENHAM, MIDDLESEX. TW1 4JR</b>				
<small>THE INFORMATION IS GIVEN AS AN INDICATION ONLY AND IS SUBJECT TO CHANGE WITHOUT NOTICE. IN THE CONTINUAL GOAL TO IMPROVE OUR PRODUCTS, WE RESERVE THE RIGHT TO MAKE ANY MODIFICATIONS NECESSARY WITHOUT PRIOR NOTICE.</small>				

RECOMMENDED TORQUE FOR PANEL NUT : 0.34 - 0.57Nm  
MAXIMUM PANEL THICKNESS : 3mm